

Red Hat
Summit

Connect

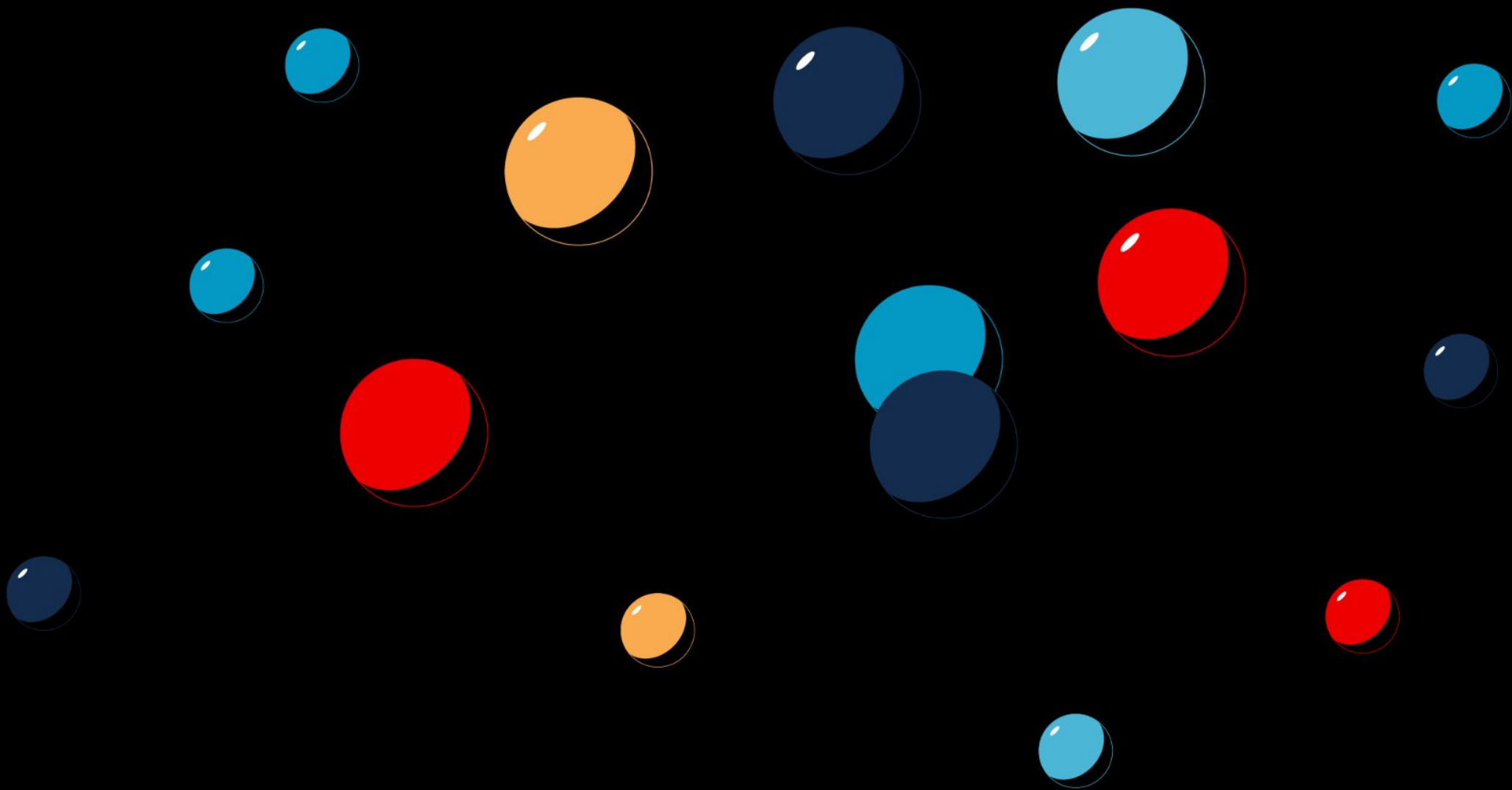
DevOps experience





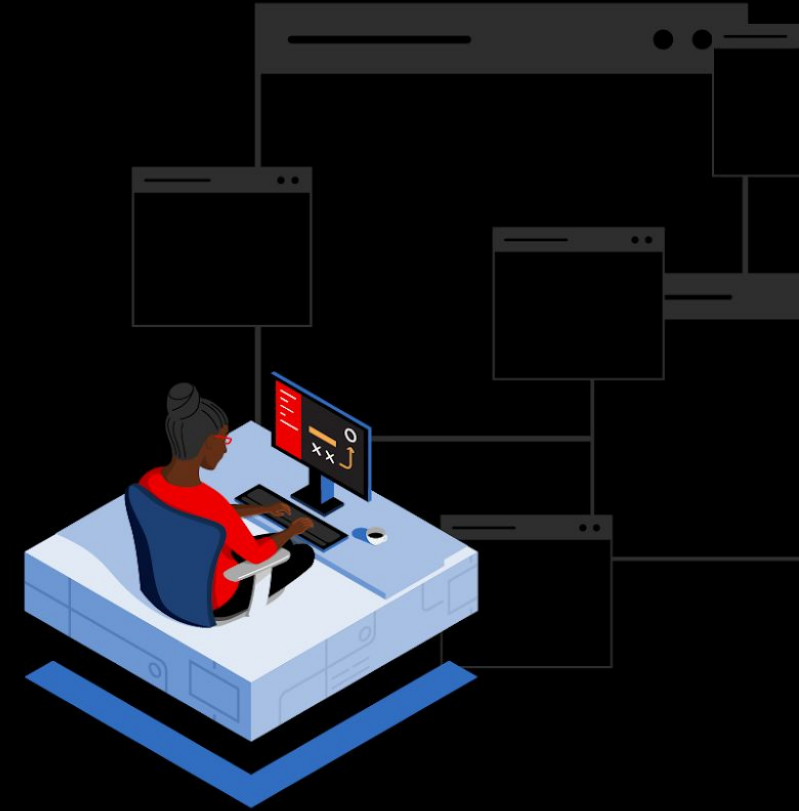
platform engineering





76%

of organizations say the cognitive load for developers is too high



Source:

["New Research Shows How to Keep Developers Happy Amid the 'Great Resignation',"](#) Salesforce, Apr. 2022.



Red Hat
Plug-ins for
Backstage



Backstage



Red Hat Developer Hub

Red Hat Developer Hub

Welcome to Red Hat Developer Hub!

Search

Home

Catalog

APIs

Docs

Create...

Tech Radar

Quick Access

COMMUNITY

- Website
- Blog
- GitHub
- Slack
- YouTube Channel
- Mailing List
- Calendar

DEVELOPER TOOLS

- OpenShift Dev Spaces
- Podman Desktop

OPENSIFT AI TOOLS

CI/CD TOOLS

Your Starred Entities

- Backstage Showcase
- Deploy with Tekton Pipeline
- HatBot UI

Red Hat OpenShift Data Science

Red Hat OpenShift Data Science allows you to quickly build and deploy AI/ML models by integrating open source tooling with commercial partner applications.

GO TO

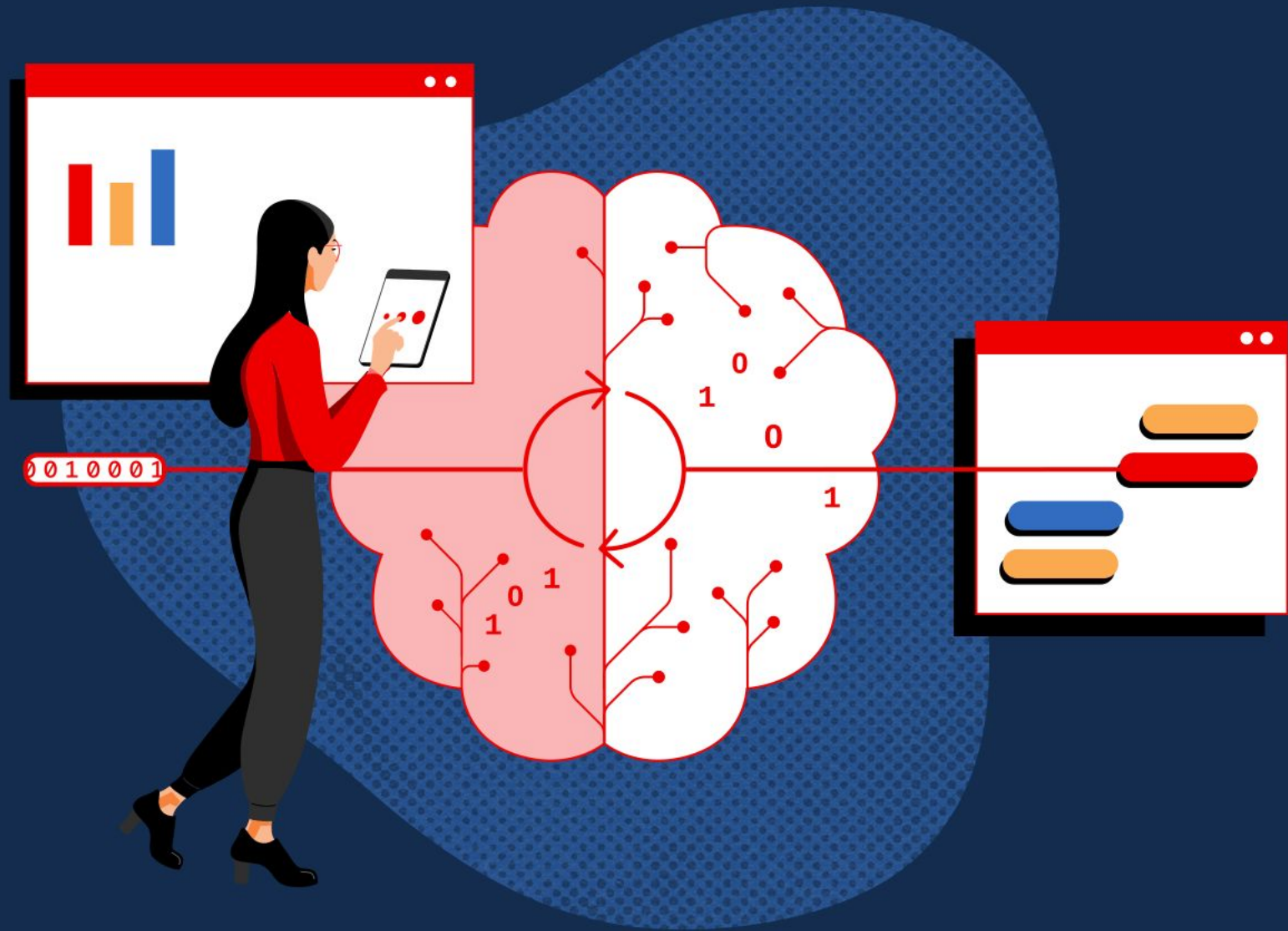


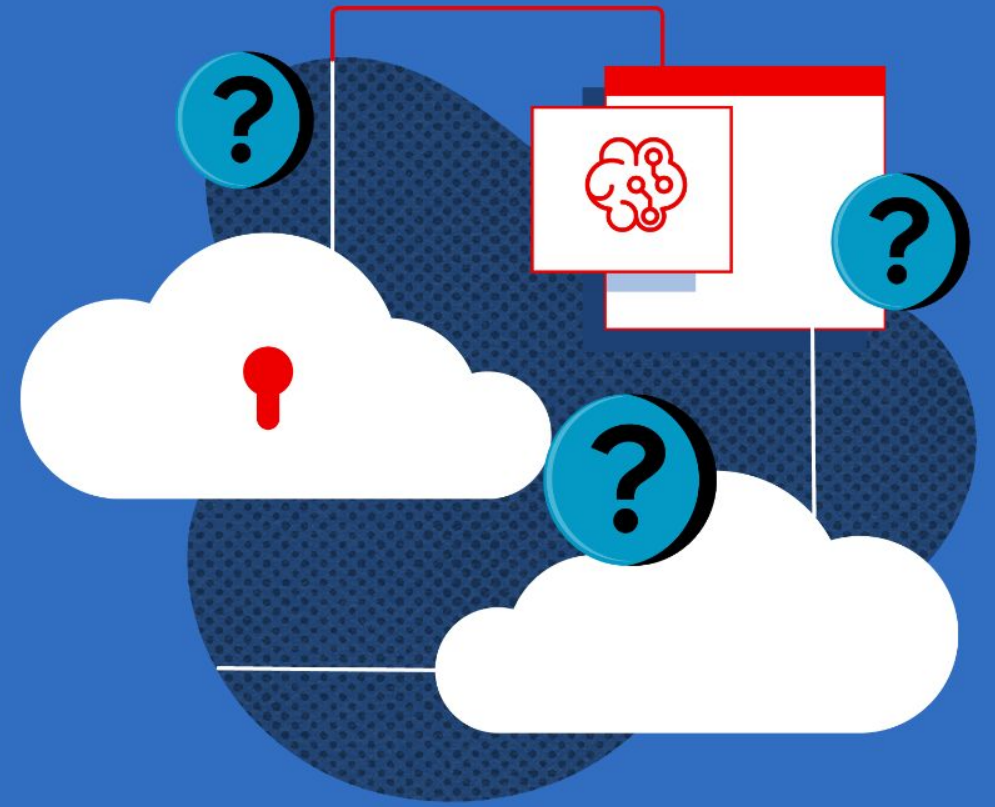
Red Hat
Developer Hub



Red Hat
OpenShift









Red Hat OpenShift AI

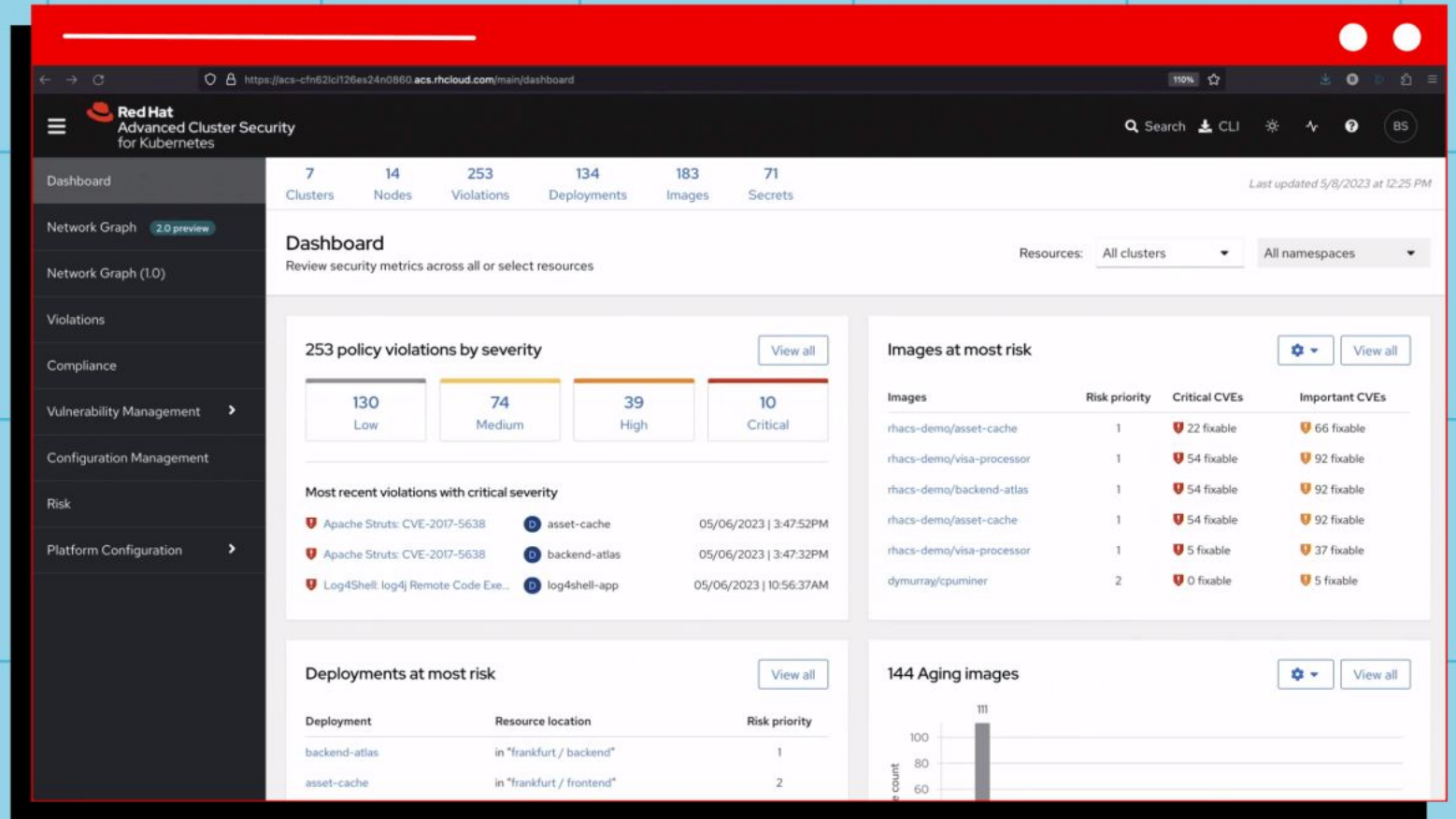
Red Hat
Summit

Connect

Security experience



Red Hat Advanced Cluster Security Cloud Service



Red Hat Advanced Cluster Security for Kubernetes

7 Clusters 14 Nodes 253 Violations 134 Deployments 183 Images 71 Secrets Last updated 5/8/2023 at 12:25 PM

Dashboard

Review security metrics across all or select resources

Resources: All clusters | All namespaces

253 policy violations by severity

130 Low	74 Medium	39 High	10 Critical
------------	--------------	------------	----------------

Images at most risk

Images	Risk priority	Critical CVEs	Important CVEs
rhacs-demo/asset-cache	1	22 fixable	66 fixable
rhacs-demo/visa-processor	1	54 fixable	92 fixable
rhacs-demo/backend-atlas	1	54 fixable	92 fixable
rhacs-demo/asset-cache	1	54 fixable	92 fixable
rhacs-demo/visa-processor	1	5 fixable	37 fixable
dymurray/cpuminer	2	0 fixable	5 fixable


Most recent violations with critical severity

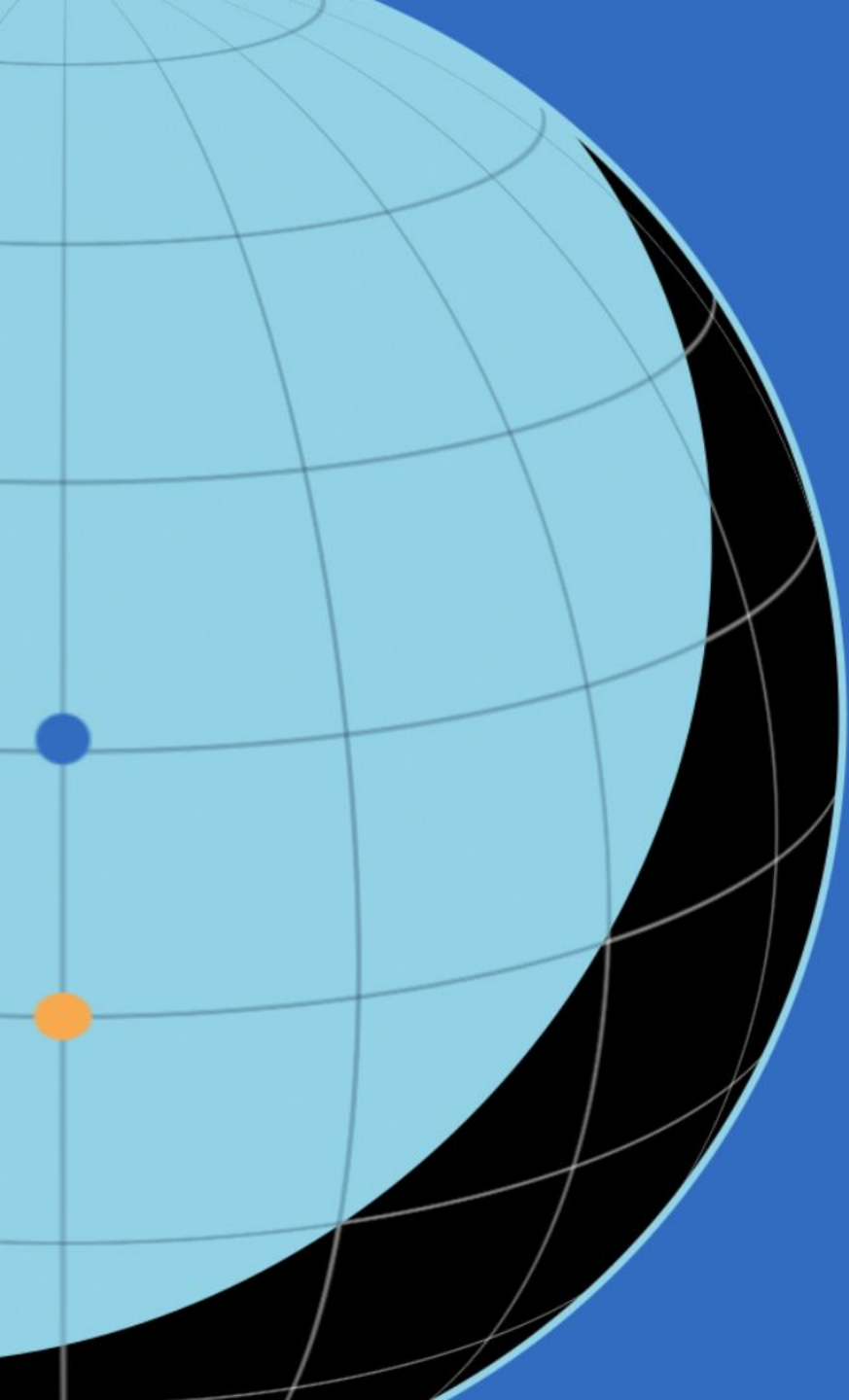
Apache Struts: CVE-2017-5638	asset-cache	05/06/2023 3:47:52PM
Apache Struts: CVE-2017-5638	backend-atlas	05/06/2023 3:47:32PM
Log4Shell: log4j Remote Code Exe...	log4shell-app	05/06/2023 10:56:37AM

Deployments at most risk

Deployment	Resource location	Risk priority
backend-atlas	in "frankfurt / backend"	1
asset-cache	in "frankfurt / frontend"	2

144 Aging images





Mitigate risk and manage security

Resilience to vulnerabilities





742%

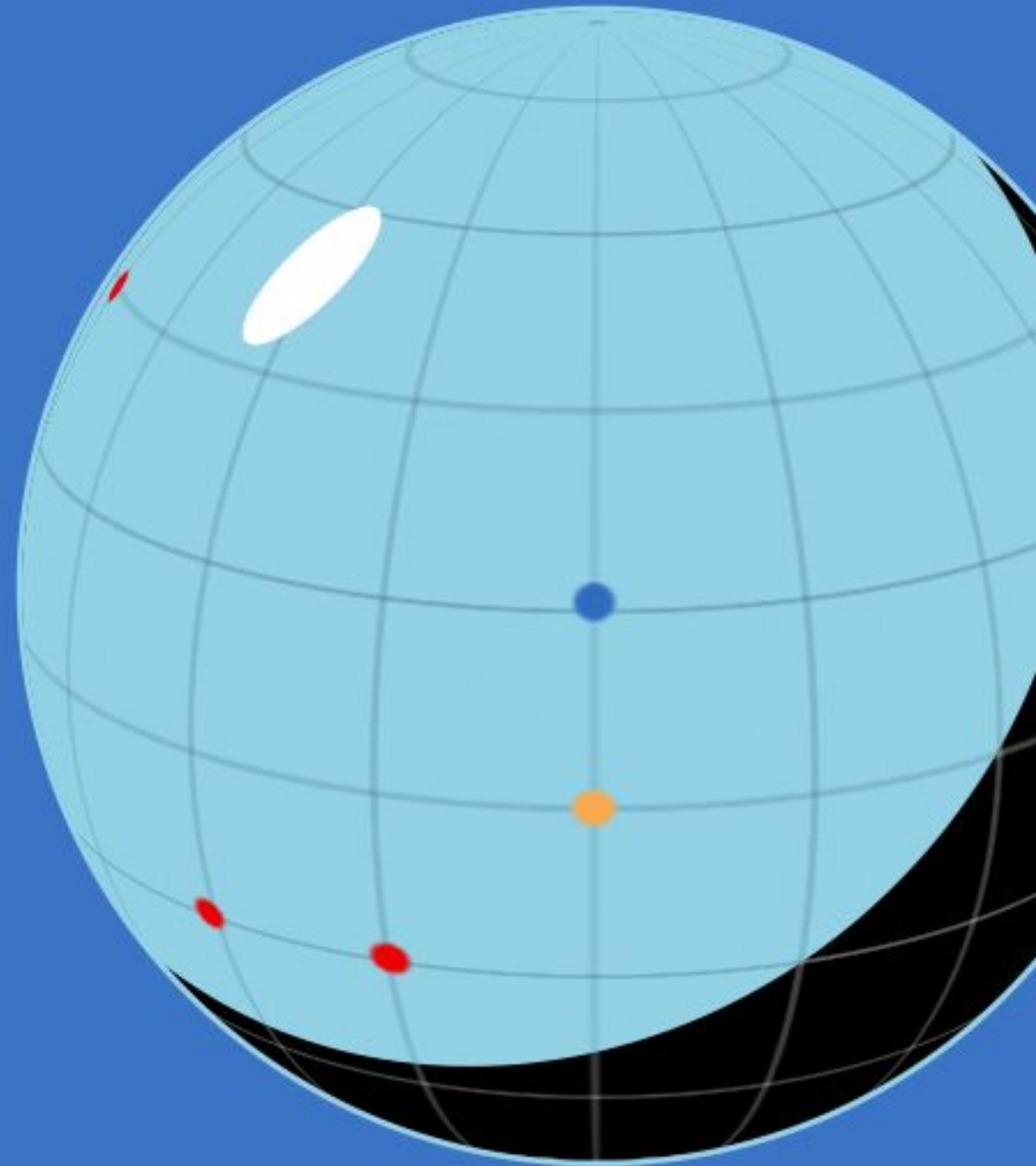


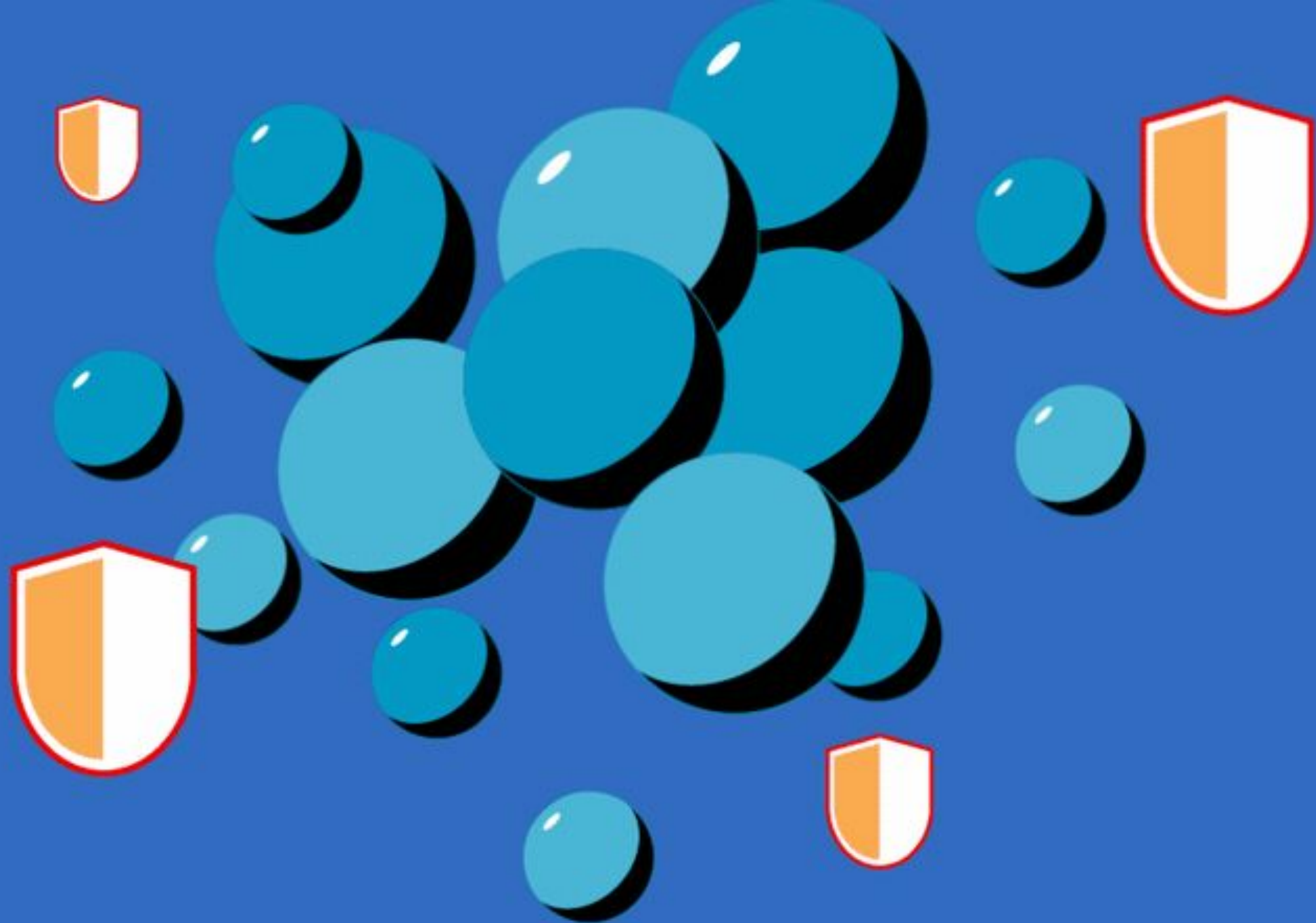
"8th Annual State of the Software Supply Chain." Sonatype, Oct. 2022.

Resilience to vulnerabilities

Big challenge

- Complying with standards
- Existing toolchain not designed to provide provenance and attestation





- CVE-2023-14801
- CVE-2025-9881
- CVE-2031-12544
- CVE-2023-22019
- CVE-2030-6190

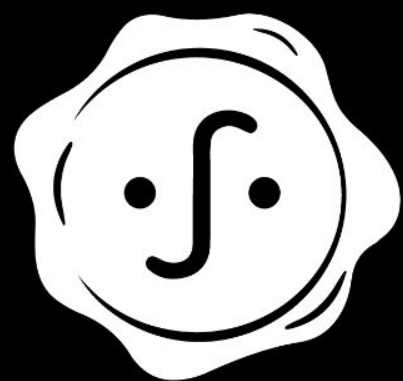
Listed CVEs

associated with this application



Update

Update all



sigstore



- A tool that automates how components are digitally signed and checked
- Trace software back to the source



Red Hat
Trusted Software
Supply Chain